

Custom Fabricators

STAINLESS STEEL LABORATORY CASEWORK



Design - Build - Install - Support

About Us

Since 1956 Custom Fabricators (CFI) has been a leading provider of laboratory furniture and equipment, casework & millwork and much more for university, research, healthcare, educational, commercial and industrial facilities throughout Ohio and beyond.

We're proud to have built a long standing reputation for providing our clients outstanding service, innovative products and solutions, and adaptable systems that meet and often exceed expectations.

That experience and expertise in architectural millwork, specialized casework and custom design solutions for specialized environments now makes CFI uniquely qualified to offer cost-effective paths to the fundamentally safer spaces required in these uncertain times.

Benefits of Partnering With CFI

What sets us apart is our ability to match products to our customers' needs. We not only provide the right products and furnishings but also the installation of a full range of products for any size project. CFI routinely assists our clients and often their architects and designers, in the planning, design, product selection, and project management process.

In addition, we offer a broad range of customized solutions to address unique product and project requirements.

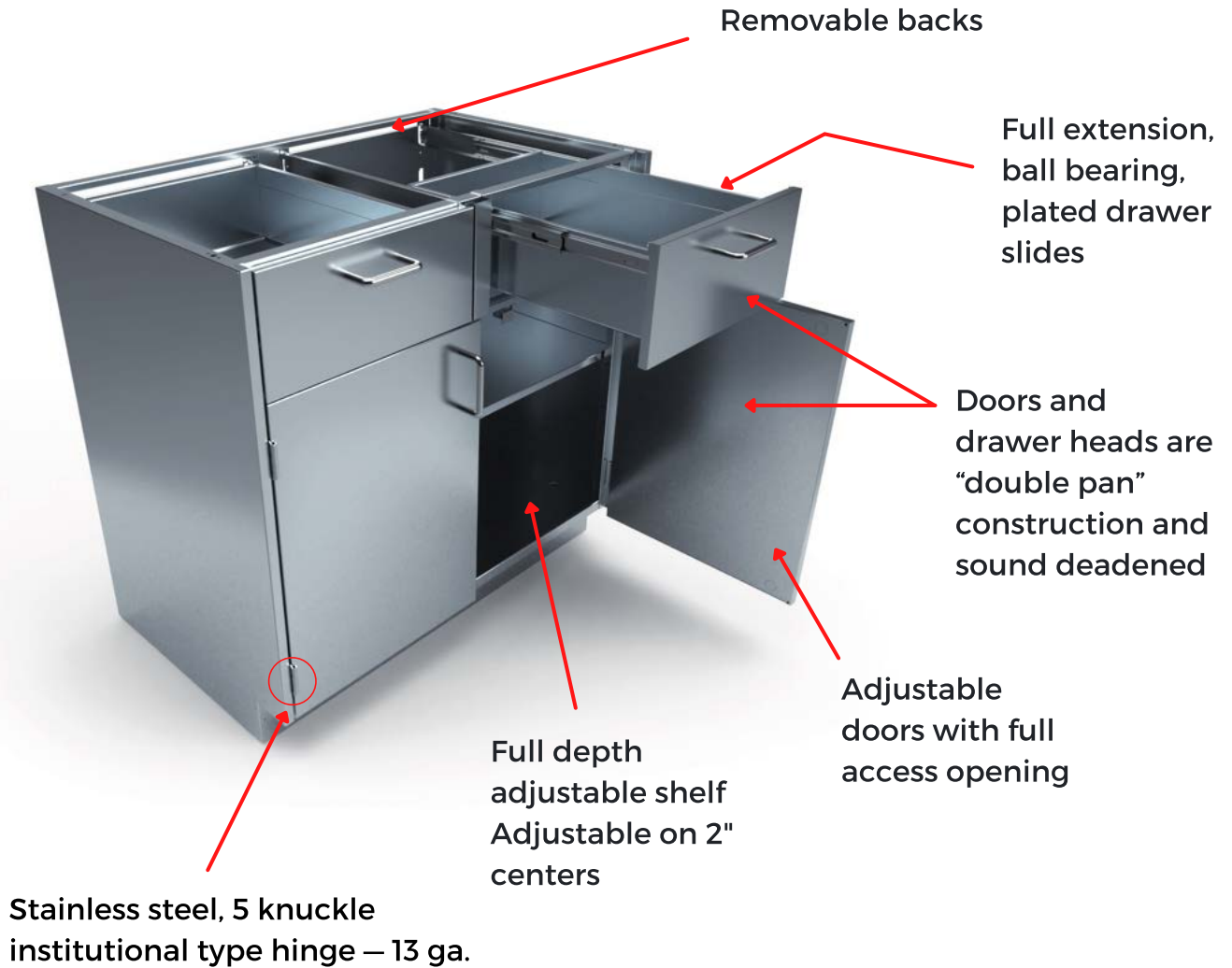
Our staff, our experienced installation crews, our interior finishing specialists and our suppliers, partners and affiliates are respected as being among the best and most reliable in the industry. It's a distinction we are proud of and one we continue working hard to develop and sustain. Exceptional project planning, execution and aftermarket support are key aspects of our commitment to you starting in the pre-bid phase and continuing well after project completion.

We take pride in having superb credit references and a large capacity bonding rating of "A" excellent. In addition, all CFI crews and field installers are fully insured to meet all job site requirements.

Table of Contents

Cabinet Specifications.....	1
Part Numbering System	2
Additional Cabinet Options	3
Base Cabinets	4
Wall Cabinets	7
Mobile & Hanging Cabinets	8
Tall Cabinets	9
Filler Panels	10
Utility Tables	11
Countertops	12

Cabinet Specifications



Part Numbering System

M-Bxx36-000

M - B x x 0 0 - 0 0 0

Material Type

- M-Metal (Painted)
- SS-Stainless Steel
- P-Phenolic
- PP-Polypropylene
- W-Wood
- PL-Plastic Laminate

Cabinet Style

- B - Base Cabinet
- W - Wall Cabinet
- T - Tall Cabinet

xx Base Cabinet Height

- Sitting Height - 29"
- ADA Height - 32"
- Standing Height - 35"

Cabinet Width

Configuration specific EX: 24", 28", 30"

Configuration

Sample

Stainless steel base cabinet, sitting height (29"), 24" wide, open front.



SS-B3524-000

Material: Stainless Steel	SS
Cabinet Style: Base	B
Cabinet Height: Standing (35")	35
Cabinet Width: 24"	24
Configuration: Open Base Cabinet	000

Options Menu

Door & Drawer Fronts



Inset Steel (Standard Default)



Flush Overlay

Drawer Slides



100 lb Full Extension
(Standard Default)

Magnetic Catch



Standard Default

Pulls



Stainless Steel Wire Pulls

Base Cabinets

Standing height base cabinets are 34.75" high and 22.375" deep. Units are available in various widths as shown. Door units feature a single shelf as standard. All open units have 2 shelves.



OPEN CABINETS



Width	Item Number
15"	SS-Bxx15-000
18"	SS-Bxx18-000
21"	SS-Bxx21-000
24"	SS-Bxx24-000
30"	SS-Bxx30-000
36"	SS-Bxx36-000
42"	SS-Bxx42-000
48"	SS-Bxx48-000

SINK & FUME HOOD CABINETS



Width	Item Number
30"	SS-Bxx30-200-S
36"	SS-Bxx36-200-S
42"	SS-Bxx42-200-S
48"	SS-Bxx48-200-S

DOOR & DRAWER CABINETS



Width	Item Number
30"	SS-Bxx30-200
36"	SS-Bxx36-200
42"	SS-Bxx42-200
48"	SS-Bxx48-200



Width	Item Number
30"	SS-Bxx30-140L
36"	SS-Bxx36-140L
42"	SS-Bxx42-140L
48"	SS-Bxx48-140L

30" and wider



Width	Item Number
12"	SS-Bxx12-110R
15"	SS-Wxx15-110R
18"	SS-Wxx18-110R
21"	SS-Wxx21-110R
24"	SS-Wxx24-110R

Right-hinged door shown

Specify "R" or "L" for Right and Left Hinge Location

"XX" = Available in Heights: 29", 32", 35" (Sitting, ADA, Standing)

Base Cabinets

Standing height base cabinets are 34.75" high and 22.375" deep. Units are available in various widths as shown. Door units feature a single shelf as standard. All open units have 2 shelves.



DRAWER CABINETS



Width	Item Number
30"	SS-Bxx30-032
36"	SS-Bxx36-032
42"	SS-Bxx42-032
48"	SS-Bxx48-032



Width	Item Number
12"	SS-Bxx12-040
15"	SS-Bxx15-040
18"	SS-Bxx18-040
21"	SS-Bxx21-040
24"	SS-Bxx24-040
30"	SS-Bxx30-040
36"	SS-Bxx36-040
42"	SS-Bxx42-040
48"	SS-Bxx48-040



Width	Item Number
12"	SS-Bxx12-020-1F
15"	SS-Bxx15-020-1F
18"	SS-Bxx18-020-1F
21"	SS-Bxx21-020-1F
24"	SS-Bxx24-020-1F

DOOR CABINETS



Width	Item Number
30"	SS-Bxx30-200
36"	SS-Bxx36-200
42"	SS-Bxx42-200
48"	SS-Bxx48-200



Width	Item Number
12"	SS-Bxx12-100R
15"	SS-Bxx15-100R
18"	SS-Bxx18-100R
21"	SS-Bxx21-100R
24"	SS-Bxx24-100R

Specify "R" or "L" for Right and Left Hinge Location

"XX" = Available in Heights: 29", 32", 35" (Sitting, ADA, Standing)

Base Cabinets

Base cabinets are 34.75" high and 22.375" deep. Units are available in various widths as shown. Door units feature a single shelf as standard. All open units have 2 shelves.



ADA HEIGHT SINK & FUME HOOD CABINETS



Width	Item Number
36"	SS-ADA36
42"	SS-ADA42
48"	SS-ADA48



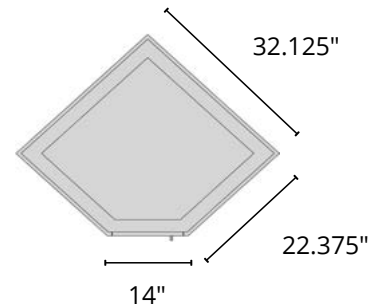
Width	Item Number
36"	SS-ADAP36
42"	SS-ADAP42
48"	SS-ADAP48

CORNER CABINETS



LH Hinge	RH Hinge
SS-BC3214-100L	SS-BC3214-100R

Right-hinged door shown



LH Hinge	RH Hinge
SS-BC3214-100L-S	SS-BC3214-100R-S

Right-hinged door shown

Specify "R" or "L" for Right and Left Hinge Location
 "XX" = Available in Heights: 29", 32", 35" (Sitting, ADA, Standing)

Wall Cabinets

Wall cabinets are available in 24", 30", 36" and 48" heights and come standard with a 13" depth. For 16" deep cabinets, use the suffix "16". Units are available in various widths as shown. They feature two shelves as standard for 30" units. Specify left- or right-hinged doors using the suffix "L" or "R" after the two digit depth number. If locks are required, use the suffix "LK".



OPEN CABINETS



Width	Item Number
18"	SS-Wxx18
24"	SS-Wxx24
30"	SS-Wxx30
36"	SS-Wxx36
42"	SS-Wxx42
48"	SS-Wxx48

STEEL-HINGED DOOR CABINETS



Width	Item Number
12"	SS-Wxx12-1RS
15"	SS-Wxx15-1RS
18"	SS-Wxx18-1RS
21"	SS-Wxx21-1RS
24"	SS-Wxx24-1RS



Width	Item Number
30"	SS-Wxx30-2S
36"	SS-Wxx36-2S
42"	SS-Wxx42-2S
48"	SS-Wxx48-2S

S = Steel Fronts

FRAMED GLASS HINGED DOOR CABINETS



Width	Item Number
12"	SS-Wxx12-1RG
15"	SS-Wxx15-1RG
18"	SS-Wxx18-1RG
21"	SS-Wxx21-1RG
24"	SS-Wxx24-1RG



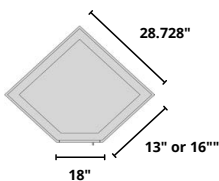
Width	Item Number
30"	SS-Wxx30-2G
36"	SS-Wxx36-2G
42"	SS-Wxx42-2G
48"	SS-Wxx48-2G

G = Glass Fronts

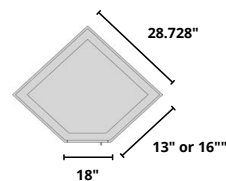
CORNER CABINETS



RH Hinge
SWC2418-1SR



RH Hinge
SWC2418-1GHR



Mobile Cabinets

All cabinets are available in a mobile version including low profile (27.18" high), sitting height (28.75" high), ADA height (31.75" high), and standing height (34.75" high). They come standard with a finished back and optional finished top. To specify a mobile cabinet use the prefix "M" to the base cabinet model number (example: SS-MB2724-110).

They come standard with a 3" caster. 2" casters are available by adding the suffix "-2" to the part number. Cabinet depth with finished back is 22.812". All mobile cabinets with drawers come standard with a tip resistant counter weight.

MOBILE CABINETS



Item Number
SS-MBxx27-110L
SS-MBxx29-110L
SS-MBxx32-110L
SS-MBxx35-110L

"XX" = Available in Heights: 29", 32", 35" (Sitting, ADA, Standing)

HANGING CABINETS



Item Number
SS-HBxx23-110L
SS-HBxx25-110L
SS-HBxx28-110L
SS-HBxx31-110L

"XX" = Available in Heights: 23", 25", 28", 31"

Add "M" for Mobile and "H" for hanging.



Tall Cabinets

Tall cabinets are 84" high and available in 16", 18", 21" and 24" deep by using the two digit suffix. Suffix is not needed when selecting 16" deep. Units are available in various widths as shown. Door units feature five shelves as standard.



Sliding door available upon request for all tall cabinets

MEDICAL CABINETS



Width	Item Number
30"	SS-F8430-2G
36"	SS-F8436-2G
42"	SS-F8442-2G
48"	SS-F8448-2G

OPEN CABINETS



30" and wider

Width	Item Number
18"	SS-F8418-000
24"	SS-F8424-000
30"	SS-F8430-000
36"	SS-F8436-000
42"	SS-F8442-000
48"	SS-F8448-000

DOOR CABINETS



Left-hinged door shown

Width	Item Number
18"	SS-F8418-1SR
24"	SS-F8424-1SR



Width	Item Number
30"	SS-F8430-2S
36"	SS-F8436-2S
42"	SS-F8442-2S
48"	SS-F8448-2S



Left-hinged door shown

Width	Item Number
18"	SS-F8418-1GR
24"	SS-F8424-1GR



Width	Item Number
30"	SS-F8430-2G
36"	SS-F8436-2G
42"	SS-F8442-2G
48"	SS-F8448-2G

Filler Panels

Base cabinet filler panels are available in 29", 32" and 35" high. Floor case filler panels are available in 84" high. They are all available in any width required by entering the dimension in lieu of the "XX" in the part number. Note: Inter Dyne base cabinets are 22.375" deep. (Example: SLF35-6.625)

C-FILLER



Height	Item Number
29"	SS-CF29-XX
32"	SS-CF32-XX
35"	SS-CF35-XX

C-FRONT FILLER



Height	Item Number
29"	SS-FFC29-XX
32"	SS-FFC32-XX
35"	SS-FFC35-XX

L-FILLER



Height	Item Number
29"	SS-LF29-XX
32"	SS-LF32-XX
35"	SS-LF35-XX

L-FRONT FILLER

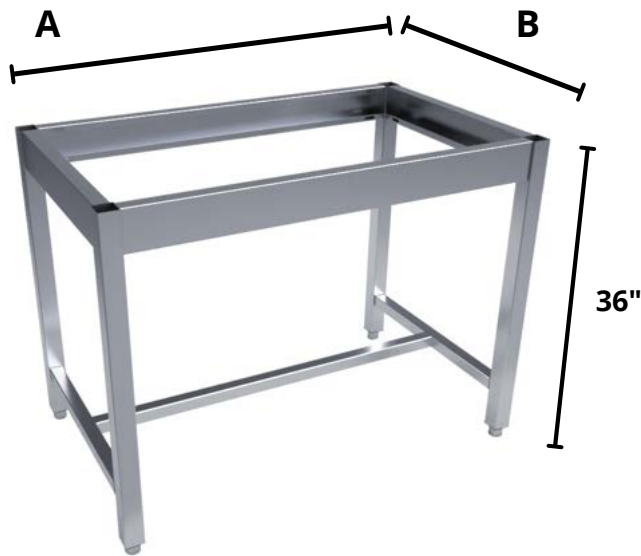


Height	Item Number
29"	SS-LFF29-XX
32"	SS-LFF32-XX
35"	SS-LFF35-XX

Utility Tables

All Stainless Steel Utility Tables are made with 2" square tube legs and adjustable bullet feet. Front to back and center stretchers with fully welded 4" tall aprons are standard. Adjustable legs are available and fixed heights are 35" tall, unless otherwise noted. Drawer options and lockable casters are available upon request. Adjustable height tables are manually adjustable with supplied locking clevis pins.*

UTILITY TABLES



Fixed Height



Adjustable Height

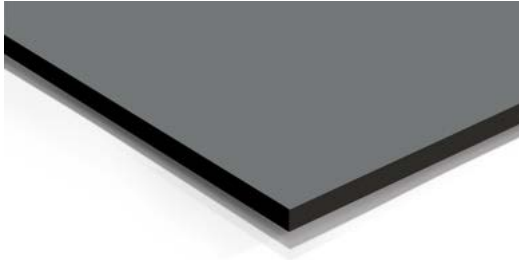
	A	B
Item Number	Length	Depth
STF-3024-36	28"	22"
STF-3030-36	28"	28"
STF-3036-36	28"	34"
STF-3624-36	34"	22"
STF-3630-36	34"	28"
STF-3636-36	34"	34"
STF-4824-36	46"	22"
STF-4830-36	46"	28"
STF-4836-36	46"	34"
STF-5424-36	52"	22"
STF-5430-36	52"	28"
STF-5436-36	52"	34"
STF-6024-36	58"	22"
STF-6030-36	58"	28"
STF-6036-36	58"	34"
STF-6624-36	64"	22"
STF-6630-36	64"	28"
STF-6636-36	64"	34"
STF-7224-36	70"	22"
STF-7230-36	70"	28"
STF-7236-36	70"	34"
STF-8424-36	82"	22"
STF-8430-36	82"	28"
STF-8436-36	82"	34"
STF-9624-36	94"	22"
STF-9630-36	94"	28"
STF-9636-36	94"	34"

Countertops



Epoxy Resin

Epoxy resin lab countertops have been an industry standard for decades. This top is an ideal work surface for applications in many labs due to its chemical and heat resistance.



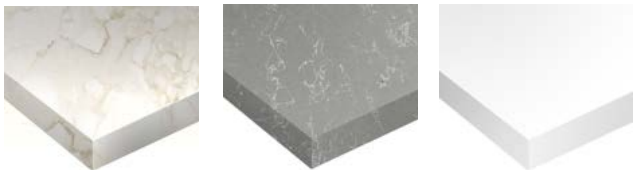
Phenolic Resin

Phenolic resin laboratory countertops are a cost-effective choice for laboratory design and workbenches. This material is ideal for areas where regular use, frequent cleaning and either some chemical resistance properties are needed or none at all.



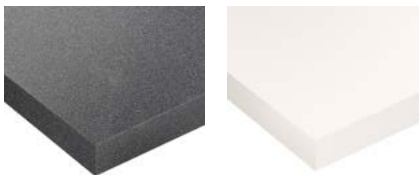
Stainless Steel

Stainless steel countertops are widely used in many industries since they are non-porous, resist corrosion and easy to clean. When used in laboratory settings, stainless steel countertops impart an aesthetically pleasing look, and can be paired with many types of lab casework materials.



Solid Surface - Corian

Corian is man-made from a mix of resin and minerals. It offers a wide range of colors, but less toughness and heat resistance compared to granite.



We also offer granite, quartz and plastic laminate.



Butcher Block

Wood butcher block countertops a good option for kitchens, factory assembly areas homes.



Cannabis Lab Design/Build



Lab Configuration, Casework & Design Collaboration



Lab Furnishings, Workstations & Layout